

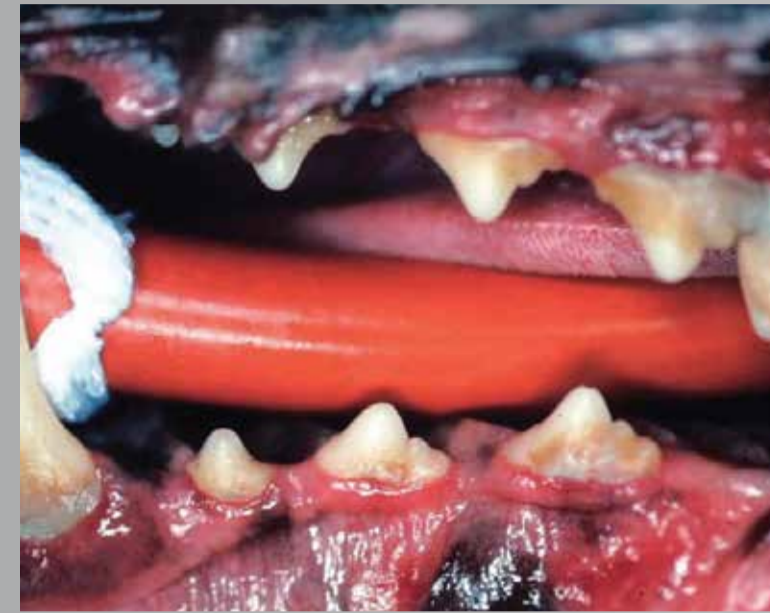


PROGRESSION OF DENTAL DISEASE



HEALTHY MOUTH

Healthy teeth and gums.



GINGIVITIS

Dental plaque is a natural removable biofilm that forms on the surface of teeth. When plaque comes into contact with the gingiva, an inflammatory reaction occurs.



CALCULUS / TARTAR

Calculus (tartar) is formed by gradual mineralisation of plaque caused by mineral salts (particularly calcium) found in saliva. Calculus must be removed by a Veterinarian.



PERIODONTITIS

Severe, advanced periodontal disease; migration of bacteria under the gingiva causing destruction of deeper-lying tissues resulting in deep infection, pain and tooth loss.



CANINE

HEALTHY MOUTH



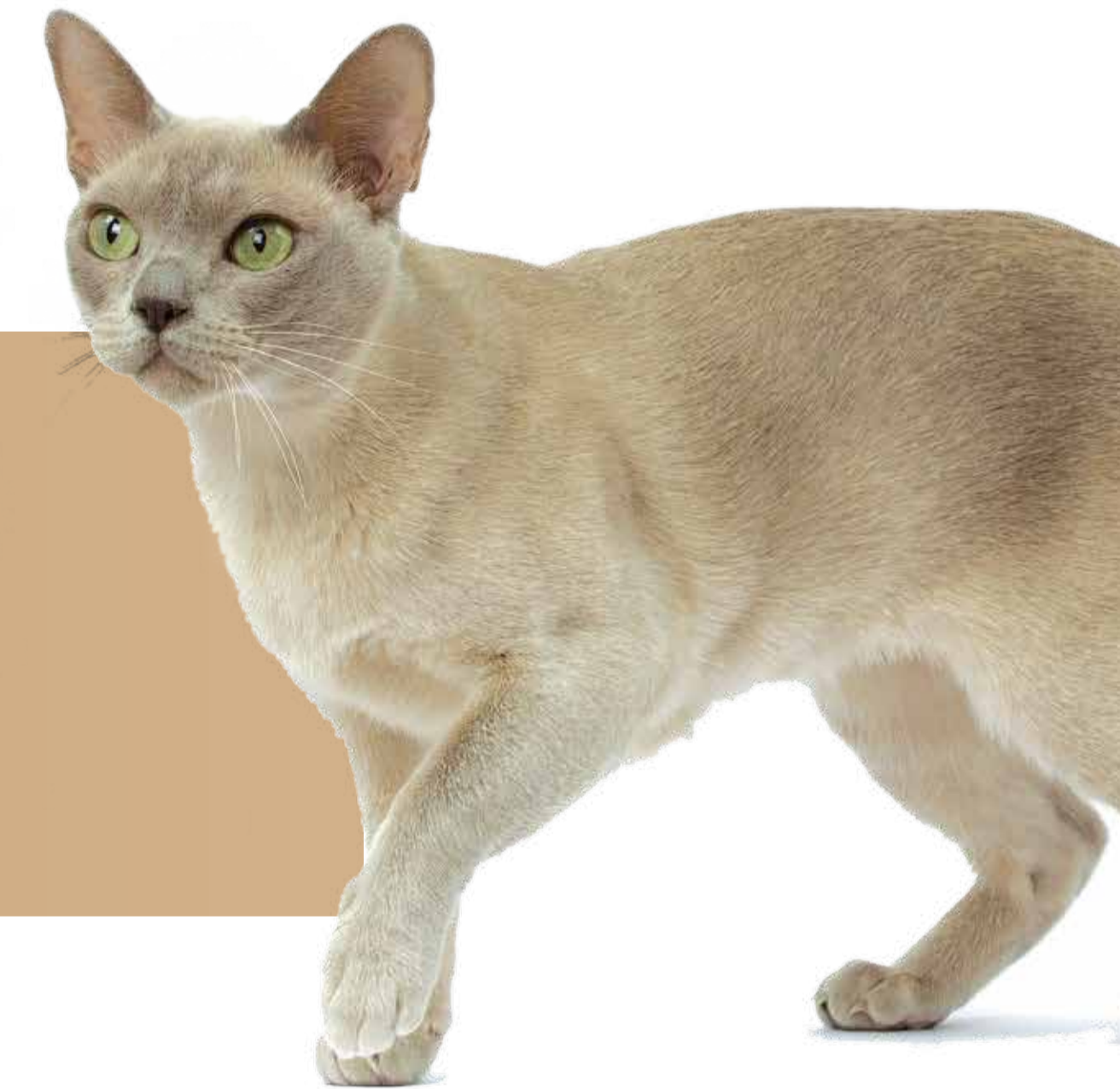
GINGIVITIS



CALCULUS / TARTAR



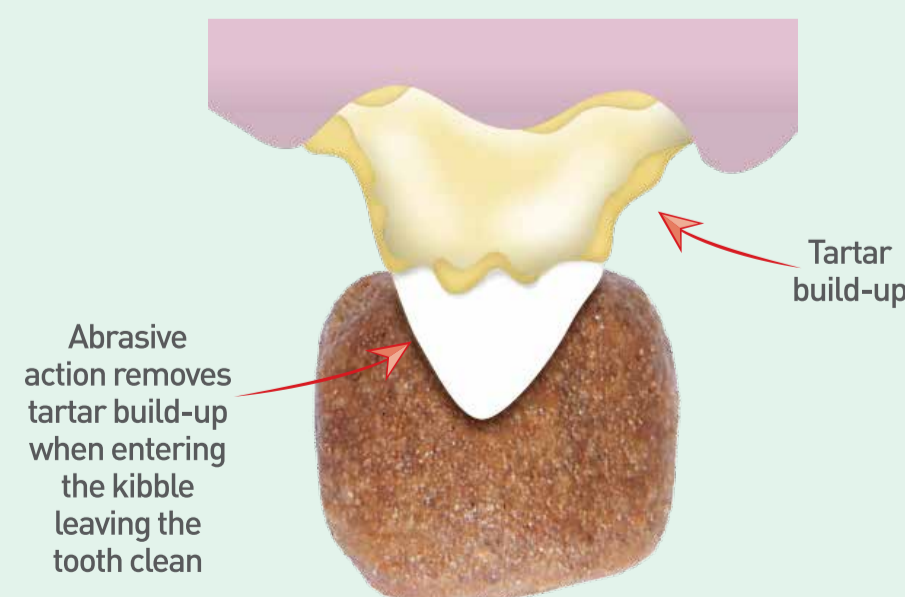
PERIODONTITIS



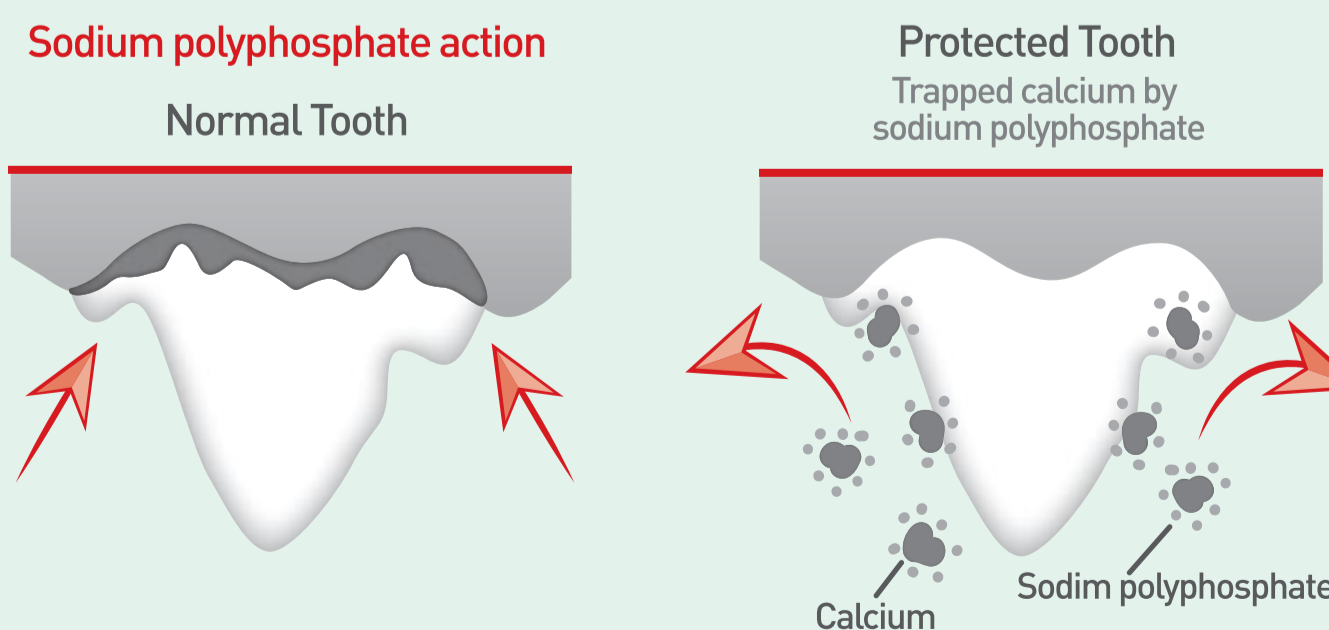
FELINE

Look after your pets teeth with Royal Canin Dental Diets. Precisely formulated with specific nutrients to help prevent dental disease in 3 ways:

1. Mechanical Action



2. Chemical Action



3. Precise Nutrients

Active nutrients with enhanced properties to assist in the reduction of dental plaque and tartar.